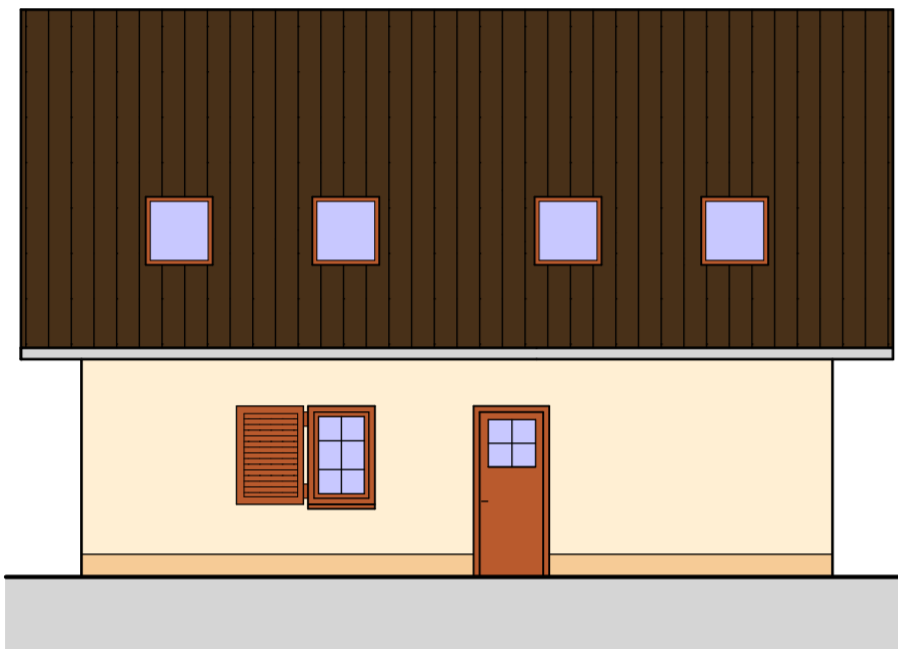


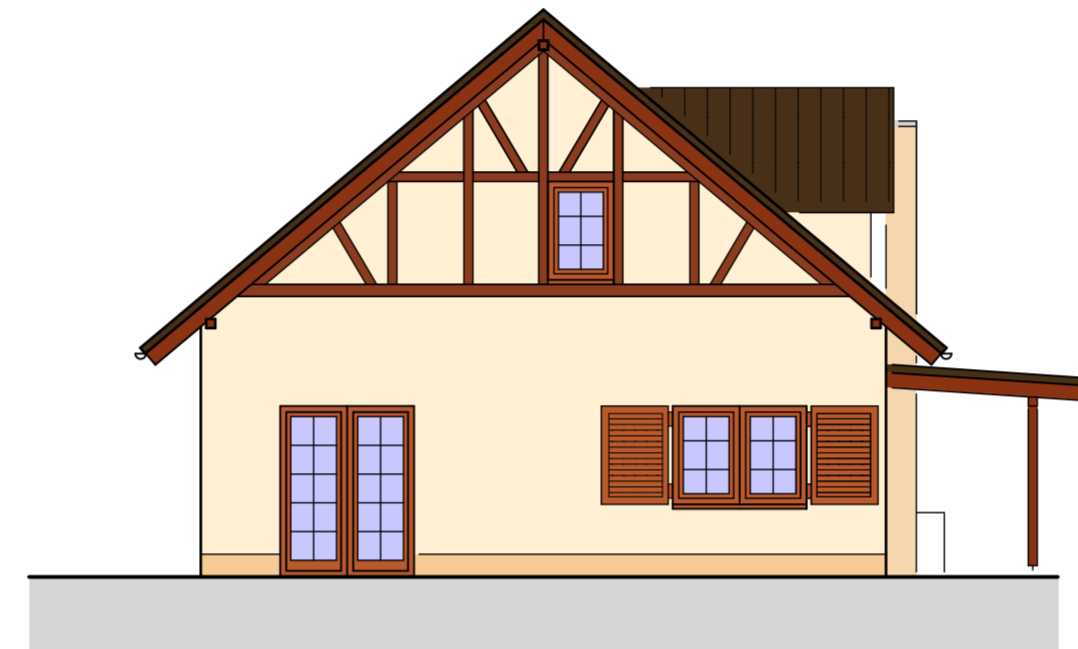
ANSICHT SÜD



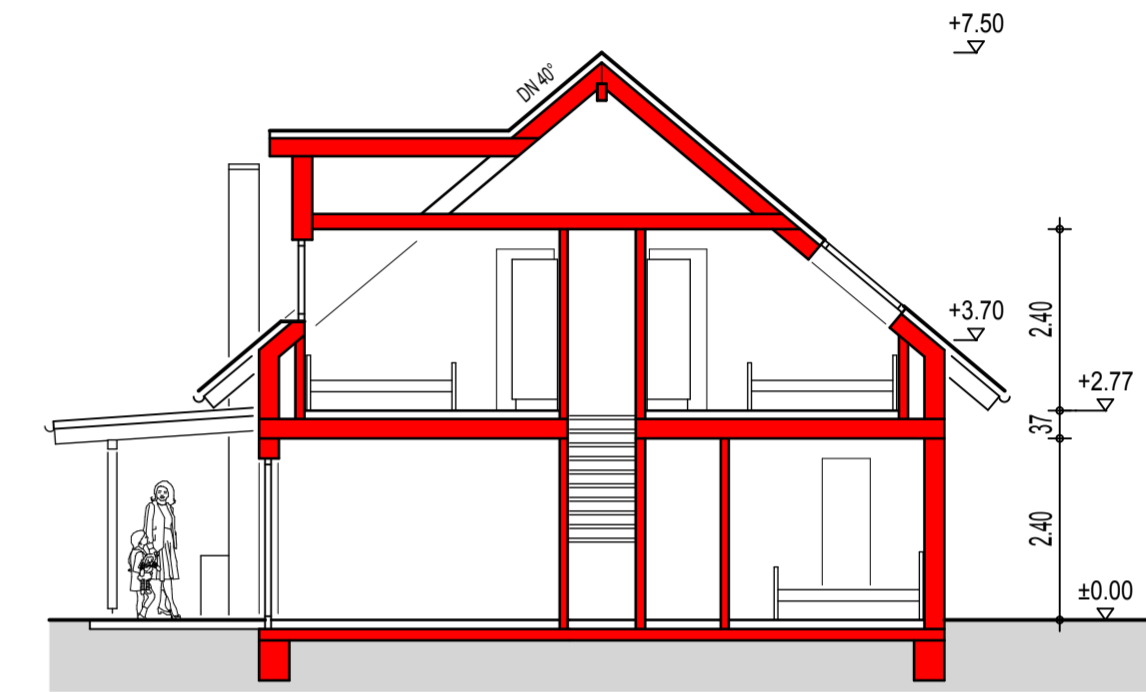
ANSICHT EINGANG



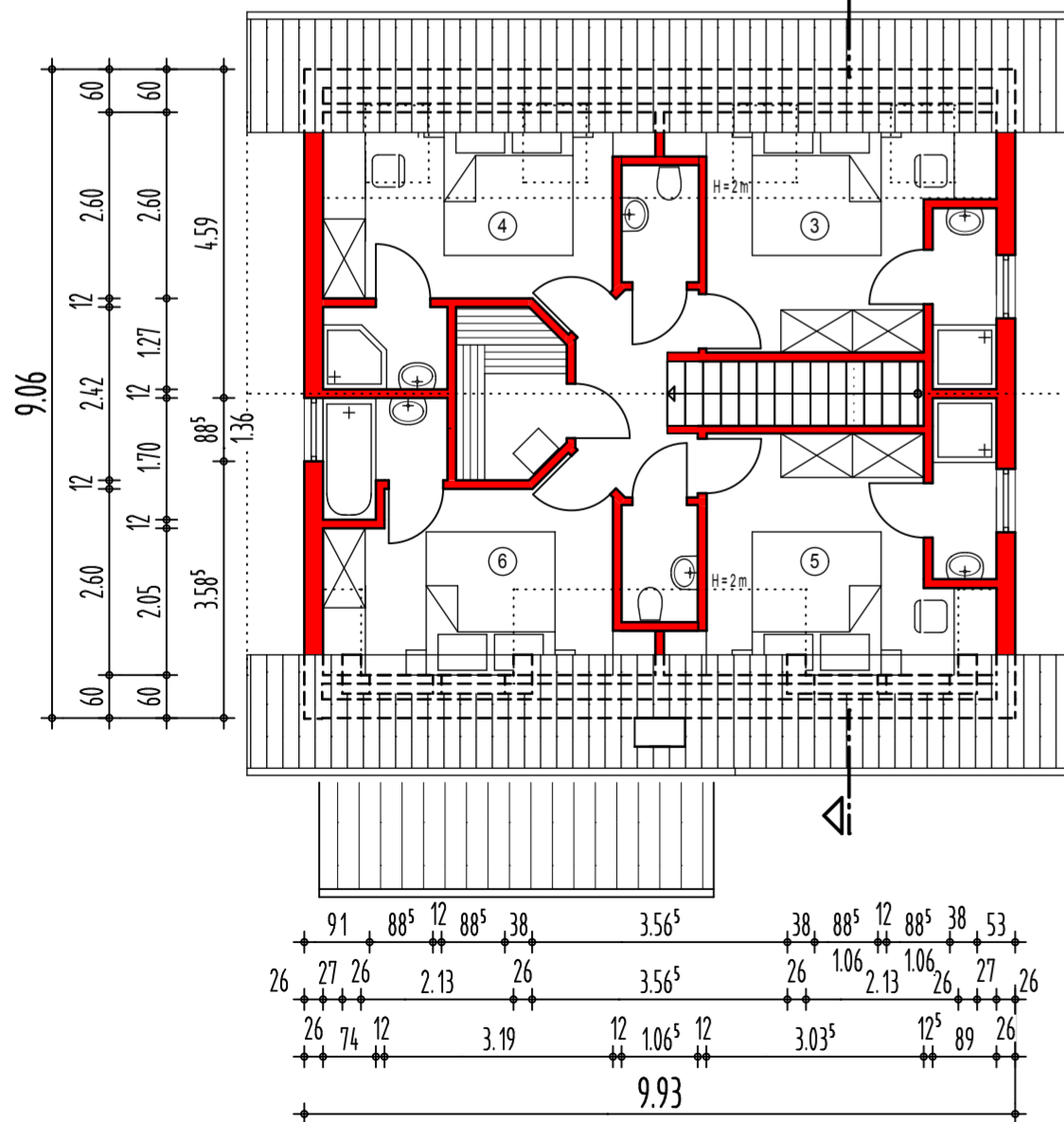
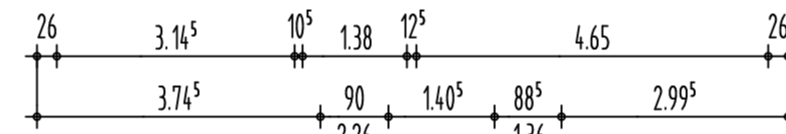
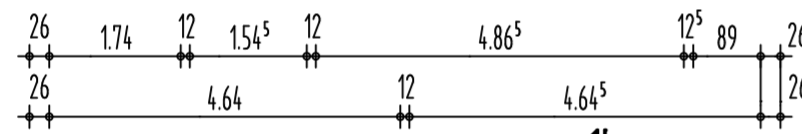
ANSICHT NORD



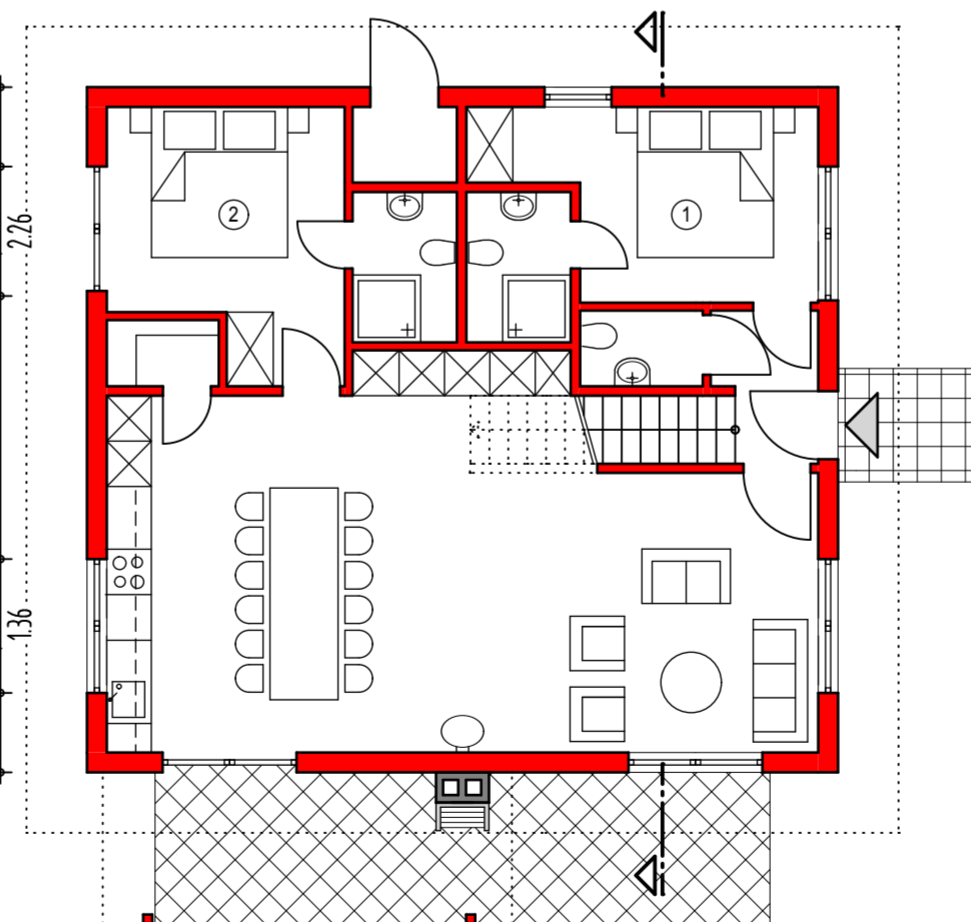
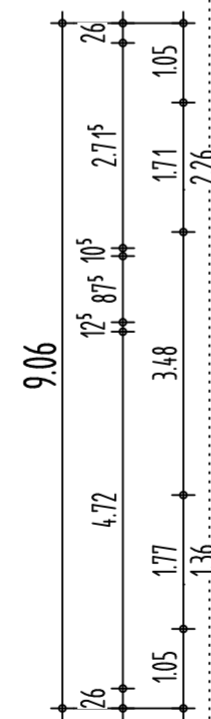
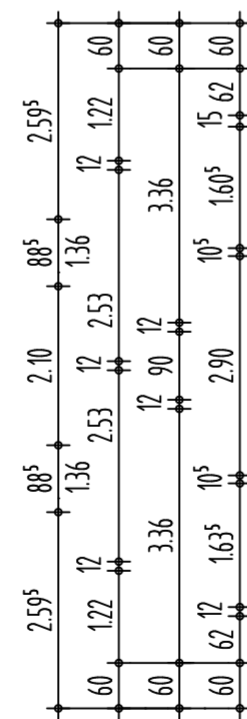
ANSICHT WEST



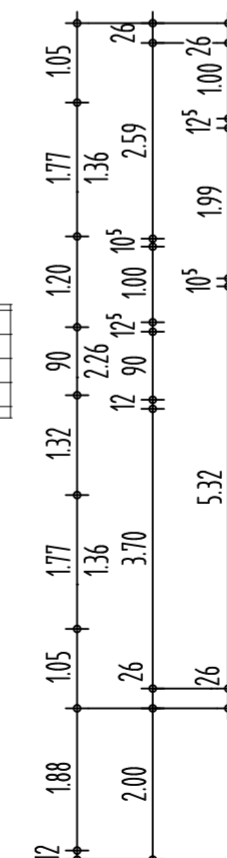
SCHNITT



DACHGESCHOSS



ERDGESCHOSS



Kall, ??..03.2009
Entwurfsverfasser

Kölner Straße 25 · D-53925 Kall Telefon +49(0)2441/9990-0 · Fax 9990-40 info@pe-becker.de · www.pe-becker.de		BECKER GmbH Architekten + Ingenieure	
Bauherr :	Henk Vossen, EuroResorts Gravenkasteel 29, NL-6028 RK Gastel		
Bauvorhaben :	Standard Haus Silvretta, 12 Personen Ferienpark Kronenburger See, Zum Kleebusch 15, 53945 Dahlem-Kronenburg		
Sachbearbeiter :	Scheer	Grundriss, Ansichten, Schnitt	Plan-Nr.
gezeichnet	29.04.2009 BS		E12
geändert	.	Maßstab: 1 : 100	36.125-H-